



2021-22 K12 ESEA Federal Programs Monitoring

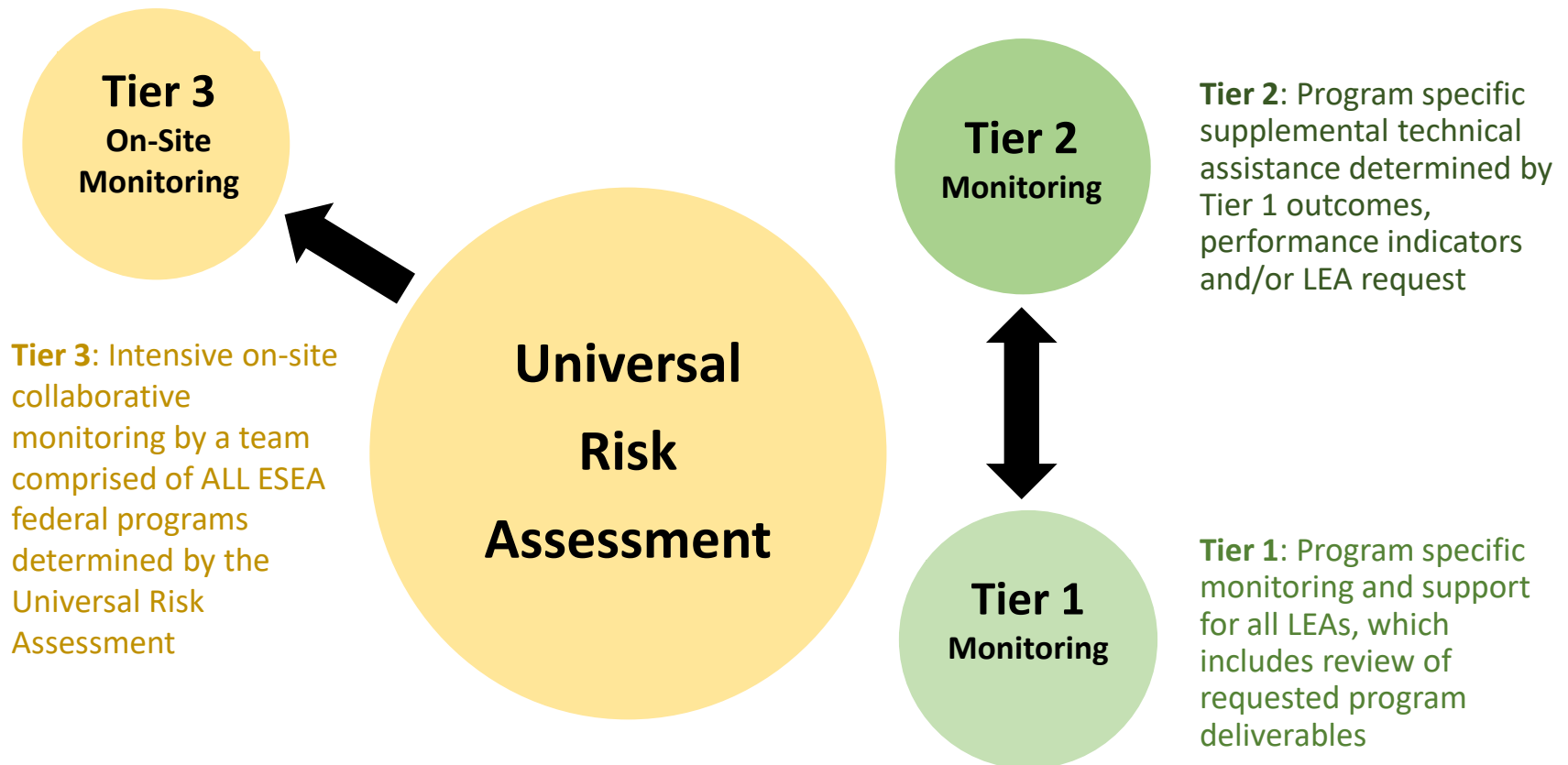
November Tier 1 Uploads and Tier 2 Supports

Title I, Part A (TIPA)

Objectives

- Universal Monitoring System
- Tier 1
 - Parent and Family Engagement
 - November Uploads
- Tier 2
- Contacts

2021-22 Universal Monitoring System for K12 ESEA Federal Programs



Program Monitoring Tier 1

Tier 1 Supports			
October Uploads	November Uploads	February Uploads	March Uploads
Title I, Part A	Title I, Part A	Title I, Part A	Title I, Part A
Transition Supports	Parent and Family Engagement	Equitable Services	Professional Development
Title I, Part C	Title I, Part C	Title I, Part C	Title I, Part C
Identification and Enrollment	Parent and Family Engagement	Equitable Services	Migrant Student Records Transfer
Title I, Part D	Title I, Part D	Title I, Part D	Title I, Part D
Transition Supports	Parent and Family Engagement	No Uploads	Student Achievement
Title II, Part A	Title II, Part A	Title II, Part A	Title II, Part A
Charter School Requirements	Program Activity and Implementation	Equitable Services	Evaluation
Title III, Part A	Title III, Part A	Title III, Part A	Title III, Part A
Identification and Enrollment	Parent and Family Engagement	Equitable Services	Professional Development
Title IV, Part A	Title IV, Part A	Title IV, Part A	Title IV, Part A
Stakeholder Consultation	Program Activity and Implementation	Equitable Services	Evaluation
Title V, Part B	Title V, Part B	Title V, Part B	Title V, Part B
Identification and Enrollment	Program Activity and Implementation	No Uploads	Evaluation
Title IX, Part A	Title IX, Part A	Title IX, Part A	Title IX, Part A
Identification and Enrollment	Professional Development	No Uploads	LEA McKinney-Vento Policy

Program Monitoring Tier 1

October Uploads	November Uploads	February Uploads	March Uploads
Title I, Part A	Title I, Part A	Title I, Part A	Title I, Part A
Transition Supports	Parent and Family Engagement	Equitable Services	Professional Development

October

- [Transition Supports](#)

November

- Parent and Family Engagement

February

- Equitable Services

March

- Professional Development

Parent and Family Engagement

What is parent and family engagement?

In support of strengthening student academic achievement, each local educational agency (LEA) that receives Title I, Part A funds must conduct outreach to all parents and family members and implements programs, activities, and procedures for the involvement of parents and family members in programs assisted under this part consistent with this section. Such programs, activities, and procedures shall be planned and implemented with meaningful consultation with parents of participating children.

Parent and Family Engagement

Examples of parent and family engagement

- Planning
 - Annual meetings
 - Schoolwide program plans
 - Parent and Family Engagement Policy
 - School compacts
- Implementation
 - Distribution and notifications
 - Technical assistance
 - Coordination and integration of strategies and activities
- Evaluation
 - Parent surveys

November Uploads

Parent and Family Engagement: Building Capacity for Involvement

To ensure effective involvement of parents and to support a partnership among the school involved, parents, and the community to improve student academic achievement...

November Uploads

Parent and Family Engagement: Building Capacity for Involvement

1. Shall provide materials and training to help parents to work with their children to improve their children's achievement, such as literacy training and using technology (including education about the harms of copyright piracy), as appropriate, to foster parental involvement.

1. Documentation of school-level communications and activities that show evidence of providing materials and training to help parents work with their children. Samples include presentation slides, training materials, handouts, or meeting minutes/notes, emails with parents, social media posts, online training videos, flyers, handouts or website screenshots.

November Uploads

Parent and Family Engagement: Building Capacity for Involvement

2. Shall educate teachers, specialized instructional support personnel, principals, and other school leaders, and other staff, with the assistance of parents, in the value and utility of contributions of parents, and in how to reach out to, communicate with, and work with parents as equal partners, implement and coordinate parent programs, and build ties between parents and the school.

2. Documentation of school-level communications and activities that show evidence of trainings that build ties between parents and the school. Samples include, agendas with dated sign-in sheets, and roles and signatures of attendees, presentation slides, training materials, handouts, or meeting minutes/notes, emails with parents, social media posts, online training videos, flyers, handouts or website screenshots.

November Uploads

Parent and Family Engagement: Building Capacity for Involvement

3. Shall, to the extent feasible and appropriate, coordinate and integrate parent involvement programs and activities with other federal, state, and local programs, including public preschool programs, and conduct other activities, such as parent resource centers, that encourage and support parents in more fully participating in the education of their children.

3. Documentation of communications and activities that show evidence of coordinating and integrating parent involvement programs and activities. Samples include presentation slides, meeting minutes/notes, emails with parents, flyers or social media posts.

Tier 2 Supports

- Tier 1 review and follow-up
- Technical Assistant (TA) Tuesdays
 - Every other Tuesday from 1-3 p.m. Eastern Time

Reminder: The **November Uploads** are **due November 30, 2021**, to the monitoring ShareFile.

Monitoring Contacts

- **Assistant Vice-Chancellor Amanda Meeks**
Amanda.Meeks@fldoe.org
- **Monitoring Consultant Dr. Janet Capps**
Janet.Capps@fldoe.org

Program Office Contacts

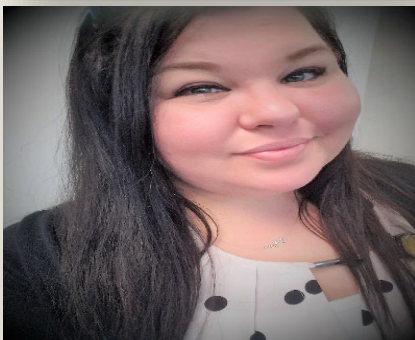


Shonda Goldsmith

Federal Program Assistant Director
Bureau of Federal Educational Programs

Shonda.Goldsmith@fldoe.org

(850) 245-0693



Samantha Mosley

Federal Program Assistant
Bureau of Federal Educational Programs

Samantha.Mosley@fldoe.org

(850) 245-0688

Program Office Contacts



Jacqueline Hill

Federal Program Specialist

Jacqueline.Hill@fldoe.org

(850) 245-0845



Matthew Wiley

Federal Program Specialist

Matthew.Wiley@fldoe.org

(850) 245-9732



Casey Graham

Federal Program Specialist

Casey.Graham@fldoe.org

(850) 245-0603

SOCIALIZE WITH US

