



2021-22 K12 ESEA Federal Programs Monitoring

February Tier 1 Uploads and Tier 2 Supports

Title I, Part A (TIPA)



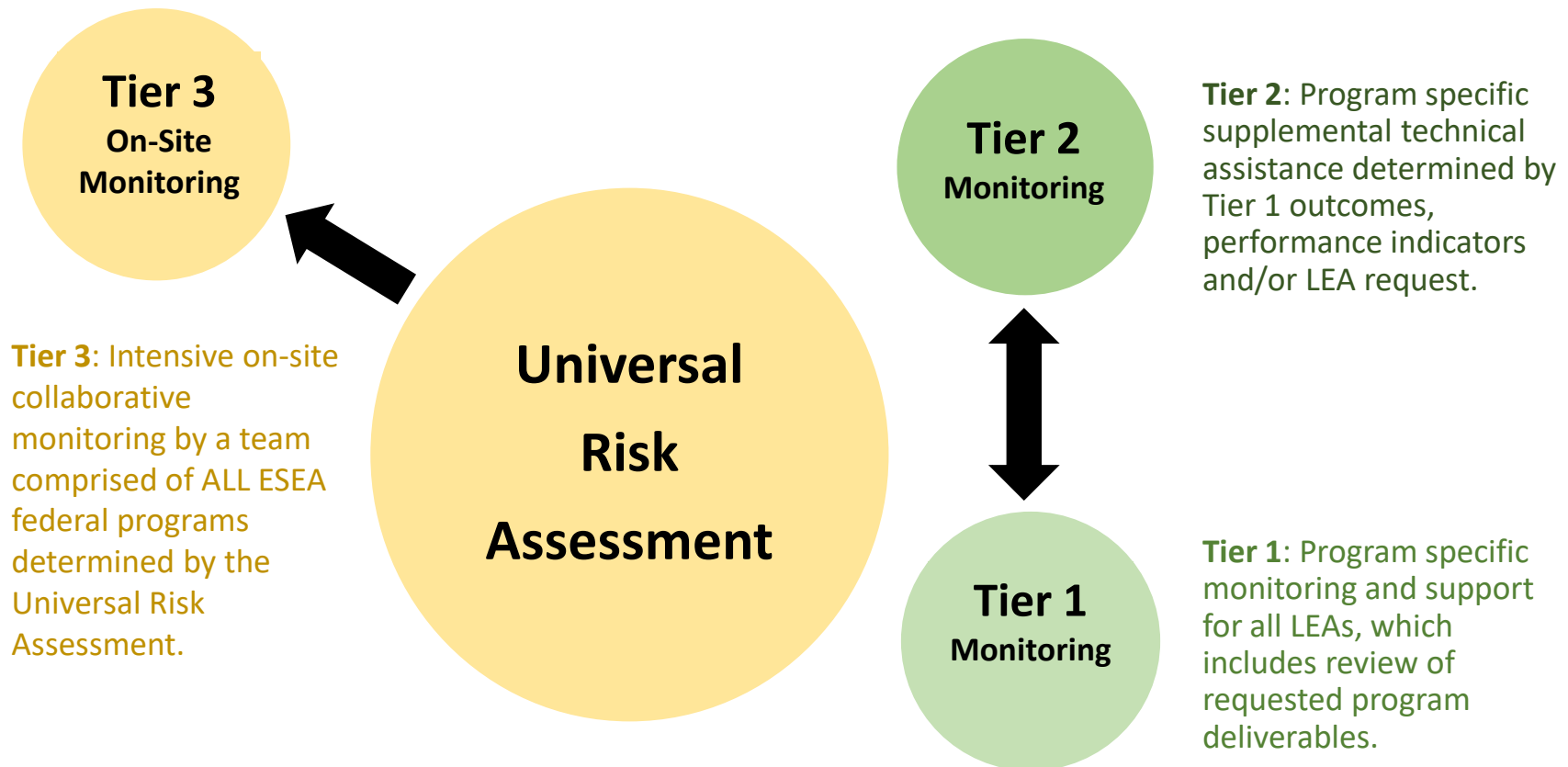


Objectives

- Universal Monitoring System
- Tier 1
 - Equitable Services
 - February Uploads
- Tier 2
- Contacts



2021-22 Universal Monitoring System for K12 ESEA Federal Programs



Program Monitoring Tier 1

Tier 1 Supports			
October Uploads	November Uploads	February Uploads	March Uploads
Title I, Part A	Title I, Part A	Title I, Part A	Title I, Part A
Transition Supports	Parent and Family Engagement	Equitable Services	Professional Development
Title I, Part C	Title I, Part C	Title I, Part C	Title I, Part C
Identification and Enrollment	Parent and Family Engagement	Equitable Services	Migrant Student Records Transfer
Title I, Part D	Title I, Part D	Title I, Part D	Title I, Part D
Transition Supports	Parent and Family Engagement	No Uploads	Student Achievement
Title II, Part A	Title II, Part A	Title II, Part A	Title II, Part A
Charter School Requirements	Program Activity and Implementation	Equitable Services	Evaluation
Title III, Part A	Title III, Part A	Title III, Part A	Title III, Part A
Identification and Enrollment	Parent and Family Engagement	Equitable Services	Professional Development
Title IV, Part A	Title IV, Part A	Title IV, Part A	Title IV, Part A
Stakeholder Consultation	Program Activity and Implementation	Equitable Services	Evaluation
Title V, Part B	Title V, Part B	Title V, Part B	Title V, Part B
Identification and Enrollment	Program Activity and Implementation	No Uploads	Evaluation
Title IX, Part A	Title IX, Part A	Title IX, Part A	Title IX, Part A
Identification and Enrollment	Professional Development	No Uploads	LEA McKinney-Vento Policy

Program Monitoring Tier 1

October Uploads	November Uploads	February Uploads	March Uploads
Title I, Part A	Title I, Part A	Title I, Part A	Title I, Part A
Transition Supports	Parent and Family Engagement	Equitable Services	Professional Development

October

- [Transition Supports](#)

November

- [Parent and Family Engagement](#)

February

- Equitable Services

March

- Professional Development





Equitable Services

What are equitable services?

An LEA must:

- Provide Title I services and other benefits to eligible children attending private schools (not-for-profit only), their teachers and their families.
- Ensure services are equitable to the public schools (not necessarily identical) and designed to meet the needs of private school students and teachers.
- Provide services that are secular, neutral and non-ideological.
- Maintain documentation demonstrating the LEA's compliance with the equitable services requirements under ESEA.



Equitable Services

Examples of documentation include:

Meeting
Minutes

Agendas

Email
Correspondence

Affirmation of
Consultation

Financial
Reports

Evaluation of
Services



FLORIDA DEPARTMENT OF
EDUCATION
fldoe.org

ESEA Section 1117





Equitable Services: Evaluation of Services

On an annual basis, LEAs must:

- Identify an appropriate standard against which to measure student progress.
- Identify or create an assessment aligned with the state standards (or the alternative standards).
- Define expected “adequate progress” for students participating in the program.
- Use the results of the assessments to make needed modifications to the Title I program.



February Uploads

Equitable Services: Evaluation of Services

1. After timely and meaningful consultation with appropriate private school officials, provide such children, on an equitable basis and individually or in combination, as requested by the officials to best meet the needs of such children, special educational services, instructional services (including evaluations to determine the progress being made in meeting such students' academic needs).
1. Documentation that the sample private school consultation for implementing current year services included a discussion of how the Title I program was to be evaluated and what constituted annual progress to be effective.





February Uploads

Equitable Services: Evaluation of Services

- | | |
|---|---|
| <p>2. Evidence that the LEA and private school officials determined the standards used to measure the effectiveness of the Title I program.</p> | <p>2. Documentation demonstrating how the 2021-22 effectiveness evaluation of services would be measured for the sample private school.</p> |
|---|---|





February Uploads

When an LEA's sample private school is not receiving 2021-22 services:

Upload evidence of the:

- LEA's request to consult invitation.
- Sample private school's decline to participate.
 - If the private school did not respond to the invitation, provide evidence of the LEA's given timeframe for the private school to respond.





Tier 2 Supports

- Tier 1 review and follow-up
- Technical Assistant (TA) Tuesdays
 - Every other Tuesday from 1-3 p.m. Eastern Time

Reminder: The **February Uploads** are **due February 28, 2022**, to the monitoring ShareFile.





Monitoring Contacts

- **Assistant Vice-Chancellor Amanda Meeks**
Amanda.Meeks@fldoe.org
- **Monitoring Consultant Dr. Janet Capps**
Janet.Capps@fldoe.org

Program Office Contacts

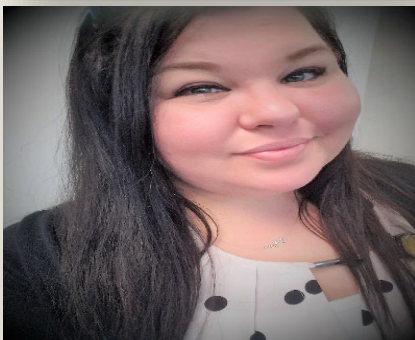


Shonda Goldsmith

Federal Program Assistant Director
Bureau of Federal Educational Programs

Shonda.Goldsmith@fldoe.org

(850) 245-0693



Samantha Mosley

Federal Program Assistant
Bureau of Federal Educational Programs

Samantha.Mosley@fldoe.org

(850) 245-0688

Program Office Contacts

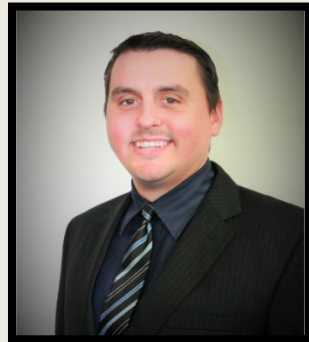


Jacqueline Hill

Federal Program Specialist

Jacqueline.Hill@fldoe.org

(850) 245-0845



Matthew Wiley

Federal Program Specialist

Matthew.Wiley@fldoe.org

(850) 245-9732



Casey Graham

Federal Program Specialist

Casey.Graham@fldoe.org

(850) 245-0603



SOCIALIZE WITH US

